

A modern interior space featuring dark, minimalist cabinetry on the left and a light-colored marble floor. In the background, a white wall is decorated with several circular wall-mounted objects. A long, narrow wooden table with a black metal frame stands against the white wall. To the right, a dark kitchen island with a white countertop and a white chair is visible. The overall aesthetic is clean and contemporary.

Ready to Move in BRAND NEW PROPERTY

www.annaliserose.com.au



Hurstville

Apartments

1 Bed from \$690K

2 Bed from \$935K

- 10-minute walk to station.
- 24 km from CBD

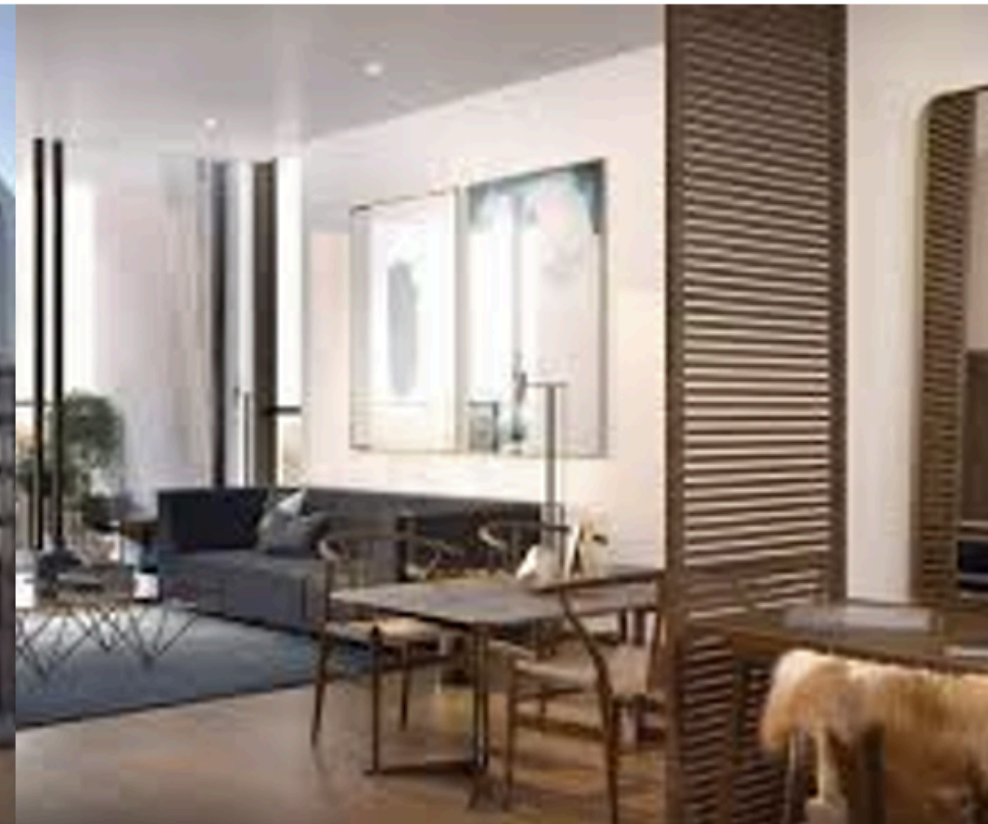
Parramatta

Apartments

1 Bed from \$690K

2 Bed from \$965K

- 12-minute walk to station.
- 25 km from CBD





Hurtsville

Apartments

1 Bed from \$690K

2 Bed from \$935K

- 10-minute walk to station.
- 24 km from CBD

Parramatta

Apartments

1 Bed from \$690K

2 Bed from \$965K

- 12-minute walk to station.
- 25 km from CBD





Lakemba

Apartments

1 Bed from \$560K

2 Bed from \$660K

- 16-minute walk to station.
- 16km from CBD



Tallawong

Apartments

2 Bed from \$780K

- 2-minute walk to station.
- 44 km from CBD

Granville

Apartments

1 Bed from \$532K

2 Bed from \$730K

- 2-minute walk to station.
- 22 km from CBD



Epping

Apartments

1 Bed from \$690K

2 Bed from \$880K

- 3-minute walk to station.
- 18 km from CBD





Merrylands

Apartments

1 Bed from \$615K

2 Bed from \$830K

- 7-minute walk to station.
- 25 km from CBD

Castle Hill

Apartments

1 Bed from \$780K

2 Bed from \$873K

- 5-minute walk to station.
- 30 km from CBD



Arncliffe

Apartments

1 Bed from \$620K

2 Bed from \$880K

- 8-minute walk to station.
- 11 km from CBD



Marsden Park

Townhouse

2 Bed from \$767K

3 Bed from \$893K

- 9-minute drive to station.
- 47 km from CBD





ANNALISE ROSE



042 664 8838



hello@annaliserose.com.au



[Book now for a chat](#)



www.annaliserose.com.au